

Class 3b cable change

SITUATION

This year 2015 a new record has been set for class 3b which exceeds 272 kph. As a result, changes are required.

1. a new cable is to be used (Class 3, yellow);
2. changes to the bridle have to be done.

Therefore, the FEMA technical Secretary has updated the relevant sections of the Technical regulations and these are attached below.

FEMA REGULATIONS (as of 2013)

2.10. Technical Regulations for Class 3b

10. The Class 3b cars are driven with a Class 2 cable (green). Should the car exceed a speed of 272 km/h a Class 3 cable (yellow) must be used (see table in section 4.5.1). The clamp must be highlighted in yellow, the weight surcharge adjusted to 0.075 kg and it must be driven with the fastening elements of Class 3.

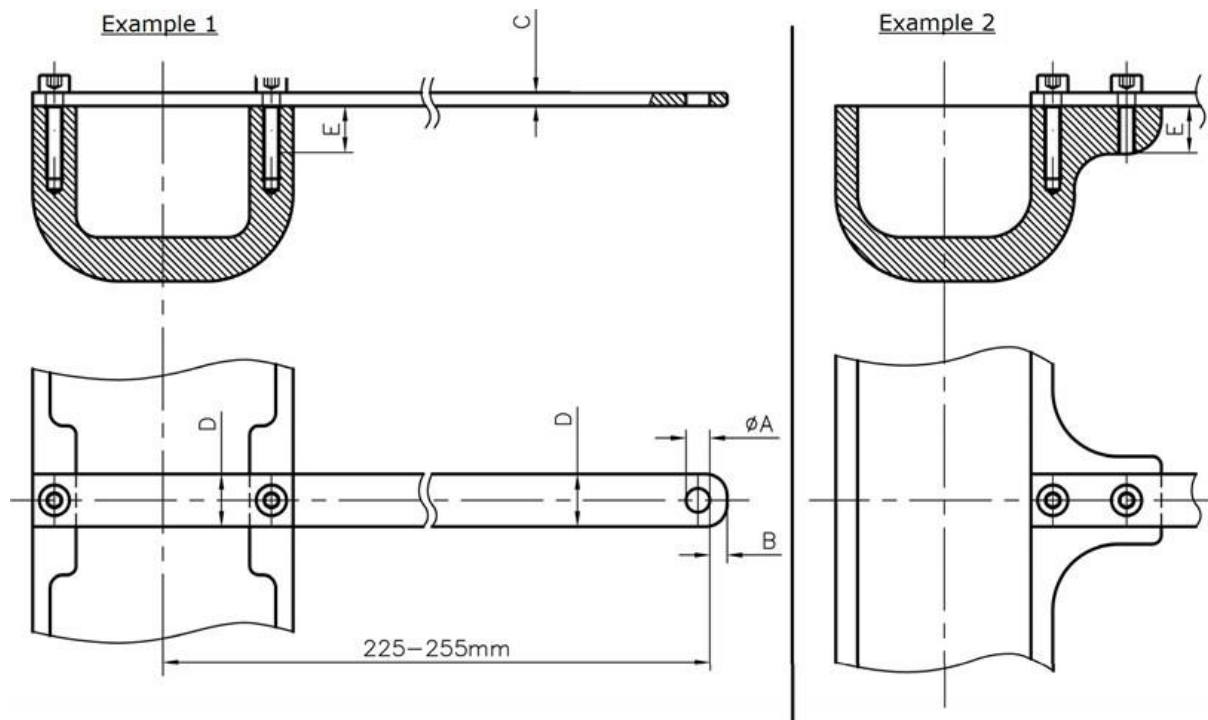
ADJUSTED REGULATIONS ACCORDING TO FEMA REGULATIONS 2013

2.6. Bridle

3. All bridles must be marked on the outside at the screw hole for the correct cable colour with a colour mark of approximately 2 cm (either painted, or with colour tape).

Classes	Colour
1	white
2	green
3 + 3b	yellow
4	red
5	black

Table: Overview of the Colour markings for the bridle / class



Class	A	B min.	B max.	C min.	C max.	D min.	E minimum screw length	min. 2 screws
1	4.5	2.0	4.0	2.0	3.5	8.5	9	M 3
2	4.5	2.5	4.0	2.0	3.5	9.5	9	M 3
3+3b	5.5	3.0	4.0	2.5	4.5	11.5	12	M 4
4	5.5	3.0	4.0	2.5	4.5	11.5	12	M 4
5	5.5	3.0	4.0	3.0	4.5	12.5	15	M 5
Screw qualities: 8.8 No countersunk screws								
Free size tolerance according to DIN 7168 middle (all sizes in mm)								

ACTION NEEDED

These changes are to be implemented by the start of the 2016 racing season.

- All FEMA race organizers are to enforce these regulation changes on all races;
- All competitors in class 3b have to adjust, or replace their bridle, so that they meet the above stated minimum standard, they are important to the safe running of our races.

O F Monk

Technical Secretary

10th December 2015